



**13<sup>th</sup> INTERNATIONAL**

## Coral Reef Symposium

**19 – 24 JUNE 2016 HONOLULU, HAWAII**

Join our scientific community and island hosts in exploring our coral reefs and ocean on three different islands in a variety of CUSTOMIZED pre and post field trips, workshops and adventures. They vary from half day field trips to multi-day programs. Each program has a minimum and will be limited to a maximum number of participants. Airfare and accommodation are not included in the tour prices, unless noted. Prices are per person for the duration of the tour.

### PRE TOURS

#### Oahu

June 18 Kaneohe Bay Coral Reef Restoration: Identifying and Removing Aquatic Invasive Species, \$299

June 18 Oahu Island MPA Tour, \$219

June 19 Coral Reef Mitigation Tour, \$195



### POST TOURS

#### Maui

June 25 Managing Maui's MPA's: From Watersheds to Co-Management, 4 nights (Overnight stay required), \$875

#### Big Island of Hawaii (Kona)

June 28 Hawaii Island Coral Reef and Volcano Tour, 2 nights (Overnight stay required), \$579

#### Oahu

June 25 Hawaii Institute of Marine Biology Open House Walking Tour, \$59

June 25 Hawaii Institute of Marine Biology Open House Snorkel Tour, \$89

June 25 Estuaries, Seagrass & Coral Reefs: Gradients in an Urban Watershed, \$385



**Excursion reservations deadline is May 12, 2016.** Tours may sell out and close before this date. For cancelled tours due to tours not making minimum - participants will be notified and alternative options will be suggested. Cancellations by the participants for tours shall be made in writing to the Excursion Registrar by May 12, refunded less a \$25 cancellation fee. Additional hotel fees may be applicable. **No refunds after May 12.**



Questions? Contact Excursion Registrar: [associate@pacificrimconcepts.com](mailto:associate@pacificrimconcepts.com)

## **13<sup>th</sup> INTERNATIONAL**

# **Coral Reef Symposium**

**19 – 24 JUNE 2016** HONOLULU, HAWAI'I

Recommended hotels on the neighbor islands are listed below. Group blocks have been reserved and reservations may be made on the excursion website. Hotels will require a one or two night deposit. By the deadline of May 12, or once the group minimum has been met, you will need to **contact the hotel directly** with your credit card information. Hotel dates will not be confirmed without a credit card deposit.

You are not required to stay at these properties. If you choose to stay elsewhere, you are responsible for getting to and from the starting point of the excursion.

Ground transportation to and from the airport and hotel, or tour starting point are at the attendees expense. Meals, parking and personal incidentals not shown as included in the excursion will be at the attendees' expense.

### **Maui Hotels:**

#### **Outrigger Aina Nalu**

660 Wainee Street  
Lahaina, Maui, HI 96761  
Phone: 808-667-9766

Group rate: \$129 per night plus 13.4166% tax. 1 Bedroom condominium, single or double occupancy. Does not include daily maid service. Subject to one-time cleaning fee of \$135 plus 4.166% tax at check-out; daily maid service not included.

### **Kona - Hawaii Hotels:**

#### **Royal Kona Resort**

75-5852 Alii Drive  
Kailua-Kona, HI 96740  
Phone: 808-329-3111

Group rate: \$149 per night plus 13.4166% tax. Run of house category, single or double occupancy



**13<sup>th</sup> INTERNATIONAL**

## **Coral Reef Symposium**

**19 – 24 JUNE 2016 HONOLULU, HAWAII**

### **Kaneohe Bay Coral Reef Restoration: Identifying and Removing Aquatic Invasive Species**

Reactive measures are being taken to mitigate aquatic invasive species (AIS) on Hawaiian coral reefs. This field experience will take you on a journey from recognizing vectors of AIS transfer, to identifying key invaders during a kayak tour out of He'eia Harbor, followed by a boating excursion to the SUPER SUCKER BARGE in Kaneohe Bay, built for active frontline removal of invasive macro alga. Participants will get to observe invasive algae being removed from a coral reef and active biocontrol efforts (native hatchery raised sea urchins *Tripneustes gratilla*) currently keeping algae regrowth at non-invasive levels.

Participants will need to bring their own snorkel gear\*\* including: mask, snorkel, fins, gloves, weight belt if required, 2-8 lbs. of weight (pending body weight), booties, 3-5mm wetsuit, hood (optional), seasickness medication (optional). If open-toed fins are used, please remember to bring a pair of CLOSED-TOED shoes appropriate for getting wet on a boat. Remember to bring SUNSCREEN and at least (1) liter of water per person. A BBQ picnic lunch will be provided.



#### **OBJECTIVE:**

- Discover key problematic AIS in Hawaii and vectors of transfer
- Demonstrate the mechanical removal of invasive algae from coral reefs using the Super Sucker barge.
- Observe ongoing biocontrol efforts from out plantings of native sea urchins and herd urchins to algae if necessary

#### **DATE OFFERED: PRE Tour – Saturday, June 18, 2016**

- Transportation pick up departs promptly from the Hawaii Convention Center at 7:30 AM
- Program ends at approximately 3:30 PM at the Hawaii Convention Center

**21 Persons**      **MINIMUM # TO OPERATE**  
**50 Persons**      **MAXIMUM CAPACITY**

**PRICE: \$299.00** per person\*\*

\*\*Price does **NOT** include:

- Transportation to and from the Hawaii Convention Center
- Snorkel equipment, please provide your own. Limited supply available at site.
- Recommend IRCS will not be responsible for any airline fees or related charges if the program fails to meet minimum to operate





**13<sup>th</sup> INTERNATIONAL**

## **Coral Reef Symposium**

**19 – 24 JUNE 2016 HONOLULU, HAWAI'I**

### **Oahu Island MPA Tour**

Oahu has a variety of Marine Protected Areas (MPAs), ranging from minimal regulation to complete no-take reserves. This full day tour of the island's MPAs will include opportunities to snorkel at key protected areas. Sites will include the Waikiki Marine Life Conservation District (MLCD) and the Waikiki Fisheries Management Area (FRA), Hanauma Bay MLCD (includes snorkeling) on the south shore, and the Pupukea/Sharks Cove MLCD (includes snorkeling) on the island's north shore. Discussions will focus on management issues and policies. The circle island tour of the island will also highlight geography, some geology and Hawaiian natural history in between the various stops.



Participants should bring their own snorkel and sun protection gear, swimwear, towel, change of clothes and comfortable footwear that can get wet. Lunch is included.

#### **OBJECTIVE:**

- Provide background on marine habitat protection policies and programs.
- Discuss management of user groups in high density protected field environments

#### **DATES OFFERED: PRE Tour – Saturday, June 18, 2016**

- Transportation pick up departs promptly from the Hawaii Convention Center at 7:30 AM
- Program ends at approximately 5:00 PM at the Hawaii Convention Center

**20 Persons**      **MINIMUM # TO OPERATE**  
**50 Persons**      **MAXIMUM CAPACITY**

**PRICE: \$219.00** per person\*\*

\*\*Price does **NOT** include:

- Transportation to and from the Hawaii Convention Center
- Snorkel equipment
- ICERS will not be responsible for any airline fees or related charges if the program fails to meet minimum to operate







**13<sup>th</sup> INTERNATIONAL**

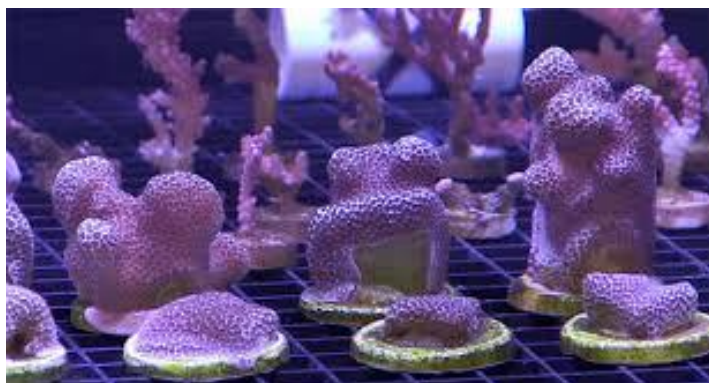
## **Coral Reef Symposium**

**19 – 24 JUNE 2016 HONOLULU, HAWAII**

### **Coral Reef Mitigation Tour (Pre)**

The State of Hawaii is actively involved in multiple forms of active restoration and mitigation of impacted coral reef habitat. Many of these efforts are based out of the Division of Aquatic Resources' Anuenue Fisheries Research Center, located on Sand Island across the harbor from downtown Honolulu. Join us in a tour of our innovative Sea Urchin Hatchery where we raise native sea urchins for introduction onto Hawaiian reefs to help control invasive algae. Take an in-depth tour of our brand new, state-of-the-art Coral Restoration Nursery where we are fast-growing coral colonies for transplantation onto impacted reefs. Meet members of our Aquatic Invasive Species Response team and learn about the range of aquatic invasive species issues affecting Hawaiian reefs. After lunch, take a short walk to one of our pilot coral restoration areas and snorkel over a shallow reef flat to see a small-scale demonstration of fast-grown nursery corals being used to repair reef habitat.

Participants need to arrange to bring their own snorkel gear and towel for this full-day excursion. Lunch, cold drinks and water will be provided along with all materials.



#### **OBJECTIVE:**

- Describe the DAR Fast Grow Protocol for Coral Restoration

#### **DATES OFFERED: PRE Tour – Sunday, June 19, 2016**

- Transportation pick up departs promptly from the Hawaii Convention Center at 8:00 AM
- Program ends at approximately 3:30 PM at the Hawaii Convention Center

**20 Persons**      **MINIMUM # TO OPERATE**  
**50 Persons**      **MAXIMUM CAPACITY**

**PRICE: \$195.00** per person\*\*

\*\*Price does **NOT** include:

- Snorkel equipment
- Recommend ICERS will not be responsible for any airline fees or related charges if the program fails to meet minimum to operate



**13<sup>th</sup> INTERNATIONAL**

## **Coral Reef Symposium**

**19 – 24 JUNE 2016 HONOLULU, HAWAII**

### **Managing Maui's MPA's: From Watersheds to Co-Management**



Experience four distinct Maui reefs, hosted by local science, management and conservation partners specializing in various aspects of marine management in Maui Nui. This four night, three full day field trip starts with a focus on the US Coral Reef Task Force designated priority watershed site in West Maui, including a snorkel/SCUBA visit to the reef at Kahekili Beach Park where this effort began, accompanied by a discussion of LSBP science, herbivore dynamics and the watershed management initiative, as well as a snorkel at Honolua Bay Marine Life Conservation District (MLCD) and one additional site to look at the impacts and challenges of land based sources of pollution and watershed management efforts. The second day begins with one half day diving at Molokini Crater to look at this unique MLCD and how Hawaii's largest coral bleaching

event to date has impacted it, followed by lunch with a view and a behind the scenes tour of the Maui Ocean Center aquarium with highlights of their partner efforts with local managers and researchers on coral conservation activities. Day three starts with a Trilogy Excursion sailing catamaran boat trip and snorkel at Olowalu reef, aka 'the mother reef' and the 'jewel of Maui', to look at the past, present, and future stressors of this reef and discuss the management ideas and efforts being highlighted here, along with an on-board talk story session about Community Makai (marine) Managed Areas (CMMAs). This trip affords many opportunities to learn from each other and local hosts over casual beginning evening reception, and provided lunches.

**Participants MUST present scuba certification and current dive card to participate in scuba dives.**

#### **OBJECTIVES:**

- Contrast different types of MPA structures comparing successes and challenges
- Showcase watershed and community managed models for managing ocean health stressors
- Demonstrate impacts and implications of global stressors on reef health

**DATE OFFERED: Post Tour: June 25 – June 29, 2016**

- Program starts the evening of June 25 at the Aina Nalu Condominium, Lahaina
- Program ends the evening of June 29 at the Aina Nalu Condominium

**12 Persons      MINIMUM # TO OPERATE**  
**24 Persons      MAXIMUM CAPACITY**

**PRICE: \$875.00 per person\*\***

**\*\*Price does NOT include:**

- Airfare to Maui (OGG)
- Transportation from Maui Airport to hotel in Lahaina
- Hotel accommodations – Please see hotel site to make reservations. It is **recommended** to book a (4) night hotel stay, at the Aina Nalu Condominium at the special ICRS rate.
  - Recommended Check-in: June 25, Check-out on June 29, (4) nights
- Snorkel equipment is not included for Day 2 at Honolua Bay
- ICRS will not be responsible for any airline fees or related charges if the program fails to meet minimum to operate





**13<sup>th</sup> INTERNATIONAL**

## Coral Reef Symposium

**19 – 24 JUNE 2016 HONOLULU, HAWAII**

### Hawaii Island Coral Reef and Volcano Tour

Join us on the Big Island of Hawaii for an ecological adventure to world-class coral reefs and to an active volcano! First, we will explore two coral reef locations along leeward Hawaii Island, including the well-known dive site, Kealakekua Bay Marine Life Conservation District (MLCD), and a lesser-known and newly established "Acropora garden." Hawaii Division of Aquatic Resources staff and marine biologists will be aboard to discuss ecological significance, coral bleaching impacts, and current management practices at each site prior to each snorkel opportunity. Snorkeling gear and lunch will be provided. Participants should bring adequate sun protection, swimwear, a towel, and a reusable water bottle.



Second, journey through Hawaii Island's incredible range of terrestrial ecosystems and climate zones before experiencing first-hand the phenomena that makes it all possible – an erupting volcano! Tour must-see spots within Hawaii Volcanoes National Park, and learn more about the geology, natural, and cultural history that make the park one of the most fascinating places on earth. Venture through rainforests, lava flows, and cinder fields, and get up close and personal with volcanic formations such as lava tubes, steam vents and craters. After dark, experience the red glow of Pele's eruption deep inside Halemaumau Crater. Restrictions: Guests should be able to hike on uneven or rocky terrain, and muddy conditions. Bring comfortable walking shoes, long pants, and a rain/warm jacket.

Picnic style dinner and light snacks are included. Late evening return to the hotel on June 29<sup>th</sup>.

#### OBJECTIVE:

- Visit Kealakekua Bay MLCD; Discuss coral reef status and management in West Hawaii
- Visit "Acropora gardens"; Discuss the ecological significance of this area
- Visit Hawaii Volcanoes National Park; Discuss the geology and tour the volcanoes

#### DATE OFFERED: POST Tour - June 28 – 30, 2016

- Program starts early morning of June 28<sup>th</sup> at the Royal Kona Hotel Lobby
- Program ends the morning of June 30<sup>th</sup> at the Royal Kona Hotel

**24 Persons**      **MINIMUM # TO OPERATE**  
**36 Persons**      **MAXIMUM CAPACITY**

**PRICE: \$579.00** per person\*\*

\*\*Price does **NOT** include:

- Airfare to Kona, Hawaii (KOA)
- Transportation airport to hotel
- Hotel accommodations – Please see hotel site to make reservations. It is recommended to book a minimum (3) night hotel stay, at the Royal Kona Hotel at the special ICRS rate.
  - Suggested minimum (3) night stay. Check-in: Monday, June 27<sup>th</sup>, day before program starts
- ICRC will not be responsible for any airline fees or related charges if the program fails to meet minimum to operate





**13<sup>th</sup> INTERNATIONAL**

## Coral Reef Symposium

**19 – 24 JUNE 2016 HONOLULU, HAWAII**

### Hawaii Institute of Marine Biology Open House



The Hawaii Institute of Marine Biology is a cutting edge research facility on the historic island of Moku o Lo'e in Kaneohe Bay. Join us for a walking guided lab open-house to talk to our researchers and see their facilities, with stops along the way to learn about our historic island and see the shark pens and touch table.

OR you may choose to sign up for a snorkel\*\* tour of our reef edge in Kaneohe Bay. Note there will not be time to do both, please choose one or the other.

Approximately 2.5 hours on island. Additional time is for boat shuttle to/from island.

*\*\*Participants will need to bring their own snorkel gear\*\* including: mask, snorkel, fins. Changing rooms will be available. Please bring your own towel, sunscreen, water and snacks*

**DATE OFFERED: Saturday, June 25, 2016**

#### DEPARTURE & RETURN TIMES:

Tour		Depart Heeia Pier	Depart Island	Approximate return to Heeia Pier
# 1	Snorkel Tour	8:00 AM	11:00 AM	11:30 AM
# 2	Walking Tour	9:00 AM	12 Noon	12:30 PM

- **Transportation is NOT included**, you will need to provide your own transportation to Kaneohe Bay, Heeia Boat Dock/Pier. Please be at the dock at least 15 minutes prior to the departure time. (Allow minimum 30 minutes travel time from Waikiki to Kaneohe)
- Set departure and return times for each tour, times not interchangeable. This is NOT a shuttle
- ICRS will not be responsible for any airline fees or related charges if the program fails to meet minimum to operate

**WALKING TOUR PRICE: \$59.00** per person:

**12 Persons**                      **MINIMUM # TO OPERATE**  
**20 – 40 Persons**            **MAXIMUM CAPACITY**

**SNORKEL PRICE: \$89.00** per person\*\*

**12 Persons**                      **MINIMUM # TO OPERATE**  
**20 Persons**                    **MAXIMUM CAPACITY**

**\*\*Price does NOT include:**

- Transportation from Waikiki to Heeia Pier
- Snorkel equipment, please provide your own. Limited supply available at site.





**13<sup>th</sup> INTERNATIONAL**

## **Coral Reef Symposium**

**19 – 24 JUNE 2016 HONOLULU, HAWAII**

### **Estuaries, Seagrasses, and Coral Reefs: Gradients in an Urban Watershed**

Maunalua Bay in East Honolulu offers an opportunity to experience the rapid transitions of the coastal ecosystems that characterize the Hawaiian Islands. The field trip includes walking and snorkeling tours of estuarine systems ranging from coastal groundwater sites, a lagoon with endemic water-birds, a coastal embayment including seagrass meadows and both fringing and offshore coral reefs. The urbanized watershed of Maunalua Bay is also a model setting to explore the theme of the ICRS-Bridging Science to Policy. Just after statehood, Hawaii experienced rapid development with East Honolulu undergoing extensive changes. For example, both coral reefs and estuaries were dredged and filled to expand boating opportunities for a growing population. Additionally, Hawaiian fishponds were filled in to create valuable waterfront property. How has the modernization of East Honolulu affect the island's coastal resources and cultural heritage 50 years later? This field trip will have ample opportunity to discuss the legacy of rapid development and our current need to manage Hawaii's coral reefs and endemic fishes, seagrass, algae and water-birds on habitats altered by stream channelization, invasive species and water quality degradation. A picnic box lunch will be included.



#### **OBJECTIVE:**

- Linkage between estuaries and coral reefs in the Hawaiian Islands

#### **DATES OFFERED: POST Tour – Saturday, June 25, 2016**

- Transportation pick up departs promptly from the Hawaii Convention Center at 7:30 AM
- Program ends at approximately 2:00 PM at the Hawaii Convention Center

**8 Persons      MINIMUM # TO OPERATE**  
**12 Persons    MAXIMUM CAPACITY**

**PRICE: \$385.00 per person\*\***

\*\*Price does **NOT** include:

- Transportation to and from the Hawaii Convention Center
- Recommend ICRS will not be responsible for any airline fees or related charges if the program fails to meet minimum to operate

#### **ATTIRE:**

- Reef or water shoes **mandatory**
- Snorkel equipment, optional as will be only in waist deep water
- Please remember to bring towel, hat, sunscreen and change of clothes, water bottle